



Users Guide

Version 5.0

Copyright © 2003-2008 Ken Stahlman. All Rights Reserved.

www.ksoft.net

ken@ksoft.net

Contents

| | |
|--------------------|----|
| Introduction..... | 3 |
| FontListings | 5 |
| Preferences..... | 16 |
| Printing | 21 |
| FAQ..... | 22 |

FontCat Copyright © 1997 - 2008 Ken Stahlman. All Rights Reserved.

FontCat uses software developed by the following:

Sparkle framework Copyright (c) 2006 Andy Matuschak

Thanks to Brent Simmons, whose RSS reader class was modified and used for appcast support. His class is licensed as follows:

Copyright (c) 2002, Brent Simmons

All rights reserved.

Neither the name of ranchero.com or Brent Simmons nor the names of its contributors may be used to endorse or promote products derived from this software without specific prior written permission.

THIS SOFTWARE IS PROVIDED BY THE COPYRIGHT HOLDERS AND CONTRIBUTORS "AS IS" AND ANY EXPRESS OR IMPLIED WARRANTIES, INCLUDING, BUT NOT LIMITED TO, THE IMPLIED WARRANTIES OF MERCHANTABILITY AND FITNESS FOR A PARTICULAR PURPOSE ARE DISCLAIMED. IN NO EVENT SHALL THE COPYRIGHT OWNER OR CONTRIBUTORS BE LIABLE FOR ANY DIRECT, INDIRECT, INCIDENTAL, SPECIAL, EXEMPLARY, OR CONSEQUENTIAL DAMAGES (INCLUDING, BUT NOT LIMITED TO, PROCUREMENT OF SUBSTITUTE GOODS OR SERVICES; LOSS OF USE, DATA, OR PROFITS; OR BUSINESS INTERRUPTION) HOWEVER CAUSED AND ON ANY THEORY OF LIABILITY, WHETHER IN CONTRACT, STRICT LIABILITY, OR TORT (INCLUDING NEGLIGENCE OR OTHERWISE) ARISING IN ANY WAY OUT OF THE USE OF THIS SOFTWARE, EVEN IF ADVISED OF THE POSSIBILITY OF SUCH DAMAGE.

Omni frameworks software developed by The Omni Group and

Omni Source Code software is available from The Omni Group on their web site at www.omnigroup.com.

RB Splitterview by Rainer Brockerhoff

RBSplitView and the corresponding palette for Interface Builder are Copyright©2004-2006 by Rainer Brockerhoff. Some rights reserved as described below. Check <http://www.brockerhoff.net/> for similar items and other products, papers and whatnot by Rainer Brockerhoff.

You may choose whichever of the licensed below you deem more appropriate for your specific case.

This work is licensed under the Creative Commons Attribution License, version 2.5. To view a copy of the Creative Commons Attribution License, version 2.5, visit <http://creativecommons.org/licenses/by/2.5/> or send a letter to Creative Commons, 543 Howard Street, 5th Floor, San Francisco, CA 94105-3013, USA.

This is a summary of the Legal Code (the full license) for your convenience, but is not itself a legal document. You are free:

- to copy, distribute, display, and execute the work, either in source or binary form
- to make derivative works
- to make commercial use of the work

Under the following conditions:

- Attribution. You must give the original author credit in some place where the end user can see it.
- For any reuse or distribution, you must make clear to others the license terms of this work.
- Any of these conditions can be waived if you get permission from the copyright holder.
- Your fair use and other rights are in no way affected by the above.

In addition, RBSplitView is also licensed under the MIT license, approved by the Open Source Initiative.

Permission is hereby granted, free of charge, to any person obtaining a copy of this software and associated documentation files (the "Software"), to deal in the Software without restriction, including without limitation the rights to use, copy, modify, merge, publish, distribute, sublicense, and/or sell copies of the Software, and to permit persons to whom the Software is furnished to do so, subject to the following conditions:

- What is FontCat
- Features

Introduction

What is FontCat

FontCat is designed to make it easy on you to view collections of fonts and view them on-line or print out samples for future reference. These fonts can be on your hard drive, cd or some other source, and do not have to be currently installed in the OS.

FontCat includes a layout editor for you to create your own customized layouts that can be used to print font specimen sheets or catalogs. There are layouts for printing single fonts or entire lists of fonts in various styles.

Features:

- Find all fonts contained in a folder (includes sub folders):
- MacOS fonts both Postscript Type 1 and TrueType
- MacOSX dFonts
- Windows TrueType fonts
- OpenType fonts
- List all fonts in a folder (in its actual face) without having to first install them.
- Optionally list system folder fonts.
- View the list of fonts in a slide show format so you can see and choose which fonts you want to use.
- Click on a font and bring up more detailed views, including:
 - Information about the font, including ability to copy the

file(s)

- Sample view - shows the font in various sizes
- Grid view - display all characters in the font so you can see what characters are contained in that font.
- Tryout view - allows you to type some text using the font, and change the foreground and background colors to see how the font might look in actual usage.
- Print out a listing of your fonts in their actual face without having to first install them.
- Use the built-in layout editor to design your own custom type reference pages.
 - Import your own or company logo in your layouts.
 - Includes fields for:
 - Listing of all fonts in a folder showing entire alphabet
 - Listing of all fonts in a folder by name only
 - Show alphabet for a selected font
 - Your own text for a selected font
 - Name of font
 - Location of font on a disk
 - Page number
 - Standard shapes - horizontal / vertical lines, rects (filled and unfilled)
 - Image import
 - Waterfall to show a font in various sizes
- Print your specimen sheets or font collection.
- Smart Search to create a new font set from fonts that meet certain criteria.
- Ability to create a new font listing, where you can drag fonts and save a subset of the main listing.
- Tag each with a font classification that can be used to sort the display, or display only fonts belonging to one or more classifications.
- AutoScroll through the font list to find that perfect font.
- QuickView - displays selected fonts in a small window for side by side comparison.

FontListings

IN THIS CHAPTER

- The Main Screen
- Font Listings
- Examine fonts
- Font Sample Window
- Slide Show
- Font Listing Properties

The Font Listing

The font listing or main window is the main place you will use to view fonts. These fonts can be currently installed or uninstalled. The font listing will display fonts capable of being used on MacOSX.

In addition, you can display Windows Type 1 Postscript fonts (pfb fonts).

Currently FontCat is capable of displaying the following types of fonts in a font listing:

- MacOS TrueType
- MacOS Postscript Type 1 fonts
- MacOSX dfonts
- Windows TrueType fonts (.ttf files)
- OpenType fonts

The Main Screen

This is the main screen in FontCat. From this screen you will see a listing of all of the fonts located in the directory you selected.

From the screen shot below, you can see that the main screen is divided up into 3 main columns. The left column contains all of the sets of fonts. The center column the fonts in a selected set, and the right column the faces within a selected font.

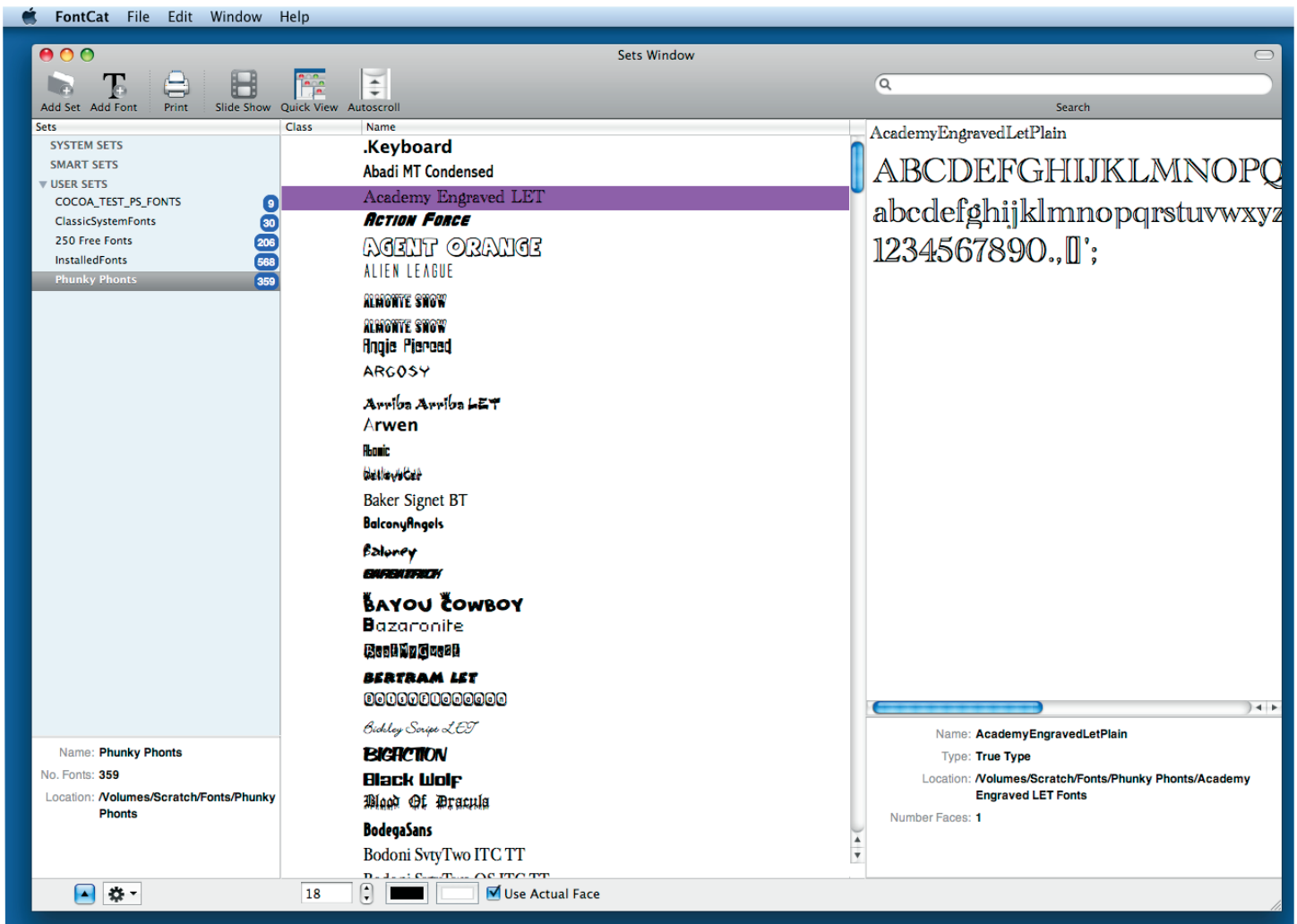


Figure 2-1 The main screen showing the various font viewing sections

The Toolbar

The toolbar provides access to the main functions of FontCat and provide a quick way to further view your fonts. The buttons are from left to right:

Add Set

This button will ask you to locate a folder, and will list all of the fonts contained in that folder, including any subfolders.

Add Font

When you want to add just a single font. If a set is currently selected, this will add the font to that set, otherwise a new set is created.

Print Button

This button gives you the opportunity to print out a listing of your fonts using either one of the built-in

layouts, a supplied layout or a layout you have created using the FontCat layout editor.

Slide Show

The slide show button will bring up a new window that enables the user to view all of the fonts in the font listing. See the Slide Show section for more information on the slide show features of FontCat.

QuickView

When you click this button, all of the selected fonts in the main font listing table will be displayed in small windows in a grid to give you a quick side by side comparison of fonts.

AutoScroll

The AutoScroll button when clicked will start the main font listing scrolling. To stop the scrolling click the button again. The button acts as a toggle button, click to start and click to stop.

Search Field

This field allows you to filter the fonts displayed in the main font listing table.

Main Font Listing section

The right most column shows the sets. The table is divided into 3 main groupings: System Sets, Smart Sets, User Sets.

System Sets

There is a set entry for each of the default font locations on MacOSX.

~/Library/Fonts/

/Library/Fonts/

/Network/Library/Fonts/

/System/Library/Fonts/

/System Folder/Fonts/

Turning on / off the listing of system sets is done through the preferences. The default is to not list the system font folders.

Smart Sets

This is used to list any fonts in the all of the other sets that mach a certain search criteria.

User Sets

These are the sets created by you the user. You can create new set entries by either clicking on either of the 2 left most toolbar buttons, or dragging and dropping fonts and folders from the MacOS.

Bottom of main screen

In this section you will find various controls for altering the way information is displayed. From left to right:

Expand / Collapse set details

This button is used to show or hide the information about the currently selected font set.

Add sets popup

This popup can be used to add new font sets, empty sets and smart sets.

Font size

This edit field and stepper control is used to adjust the size of the font names displayed in the main font listing table.

Foreground and Background Colors

These 2 buttons control the foreground color and the background color used to display the fonts in the main font listing table.

Along the top edge of the window, the Decimal and Hex values will change depending on the selected character in the grid view. In addition, you can change the displayed size of characters by the slider in the top right corner of the window.

Fonts In Actual Face

If this check box is unchecked, then the fonts are not listed in their actual face as show in the screen show below.

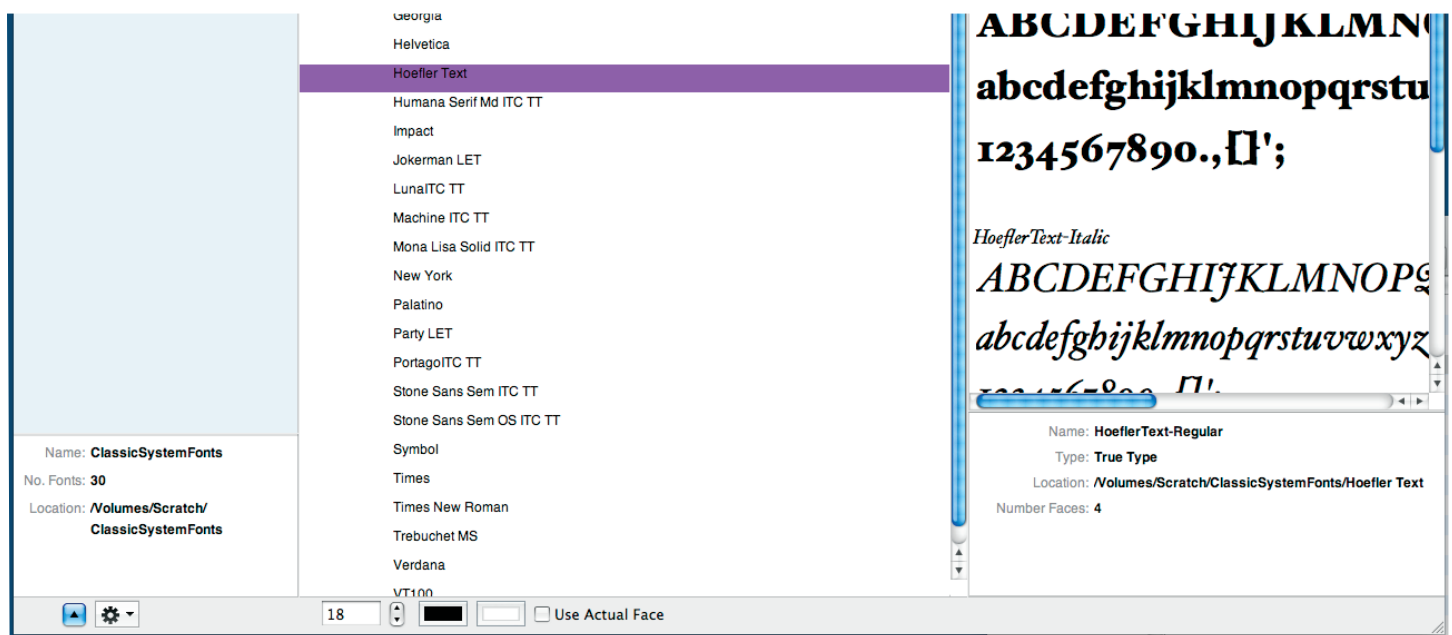


Figure 2-2 The main screen showing the font listing not in Actual Face

The Slide Show

The slide show feature of FontCat gives you an opportunity to view some or all of the fonts in a quick and convenient way. The following screen shot shows the slide show window as it first appears.

In the top section of the window is the display of the current font..

The bottom section of the slide show window is divided into 3 sections, the left one controls the foreground and background colors along with the size of the font displayed.

The right side controls the current face displayed. The bottom are from left to right - go to beginning, go back one, run / stop continuous mode, go forward one, go to end.

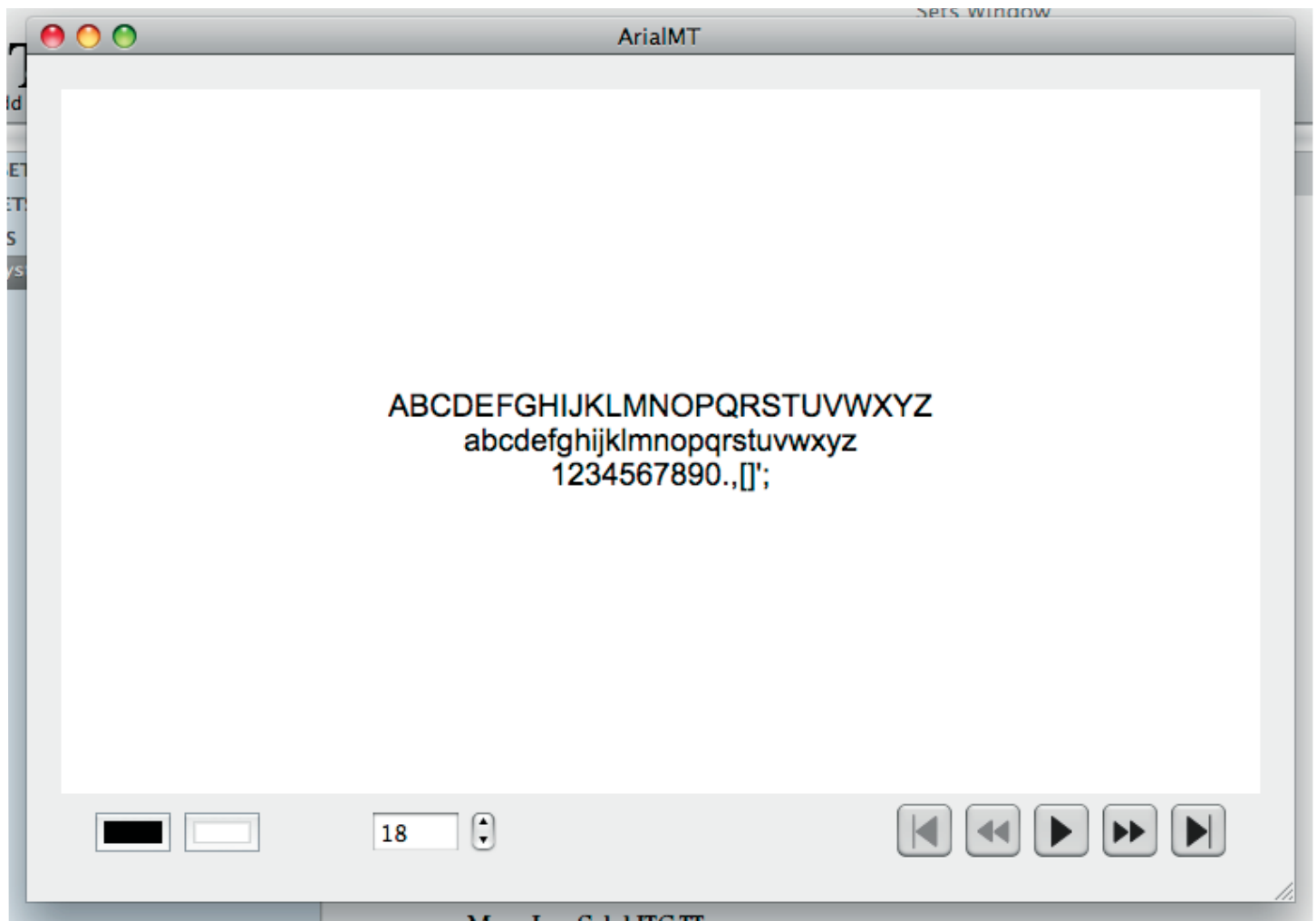


Figure 2-3 The slide show window.

Quick View

The quick view display will show all of the selected fonts in a separate window, giving you a view of several fonts at one time as shown below. This is a good view to use when you need a side by side comparison of several fonts.

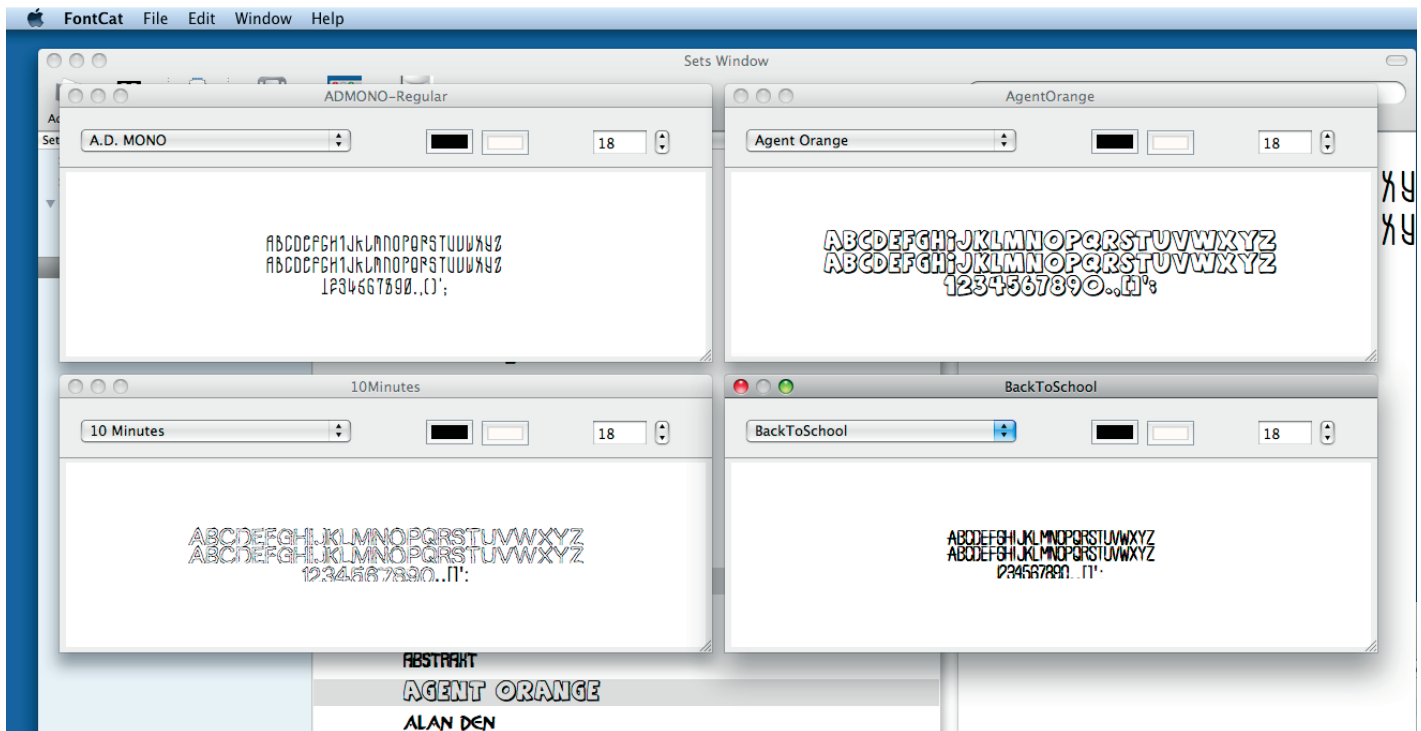


Figure 2-4 Quick View

Font Properties

Double clicking on one of the fonts in the center font listing table will bring up a new window that shows the font properties for this font.

These properties will show you the following font details:

- Font Information
- Waterfall view
- Grid view
- Tryout view

At the time of the window you will see various controls for changing the foreground and background colors displayed in some of the font properties. The size of the font displayed in the tryout section can also be changed. The top right section has a button to open a MacOS finder window showing the location of the font. And a button to open the font in Apples Font Book.

There is also a popup menu for selecting the face being displayed.

And a popup menu for changing the classification of the font.

Font Info View

This screen show below shows the font information view.

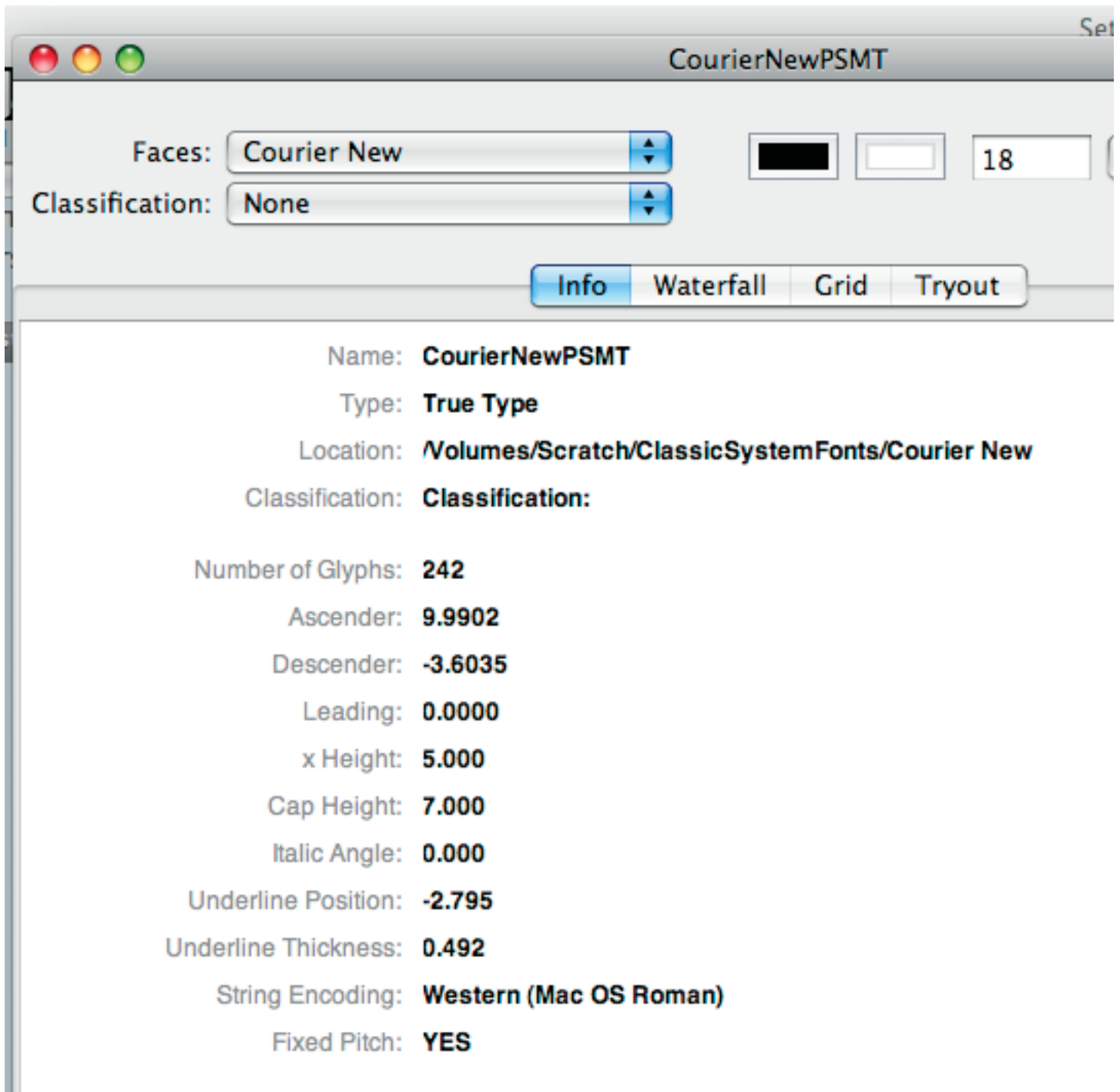


Figure 2-5 Font Properties - Font Info View

Waterfall View

This screen show below shows the waterfall view. This view shows a sample of the selected font in various sizes. This gives you an idea of what the minimum size a font will look good in. For example, some script or decorative fonts can be hard to read below a certain size.

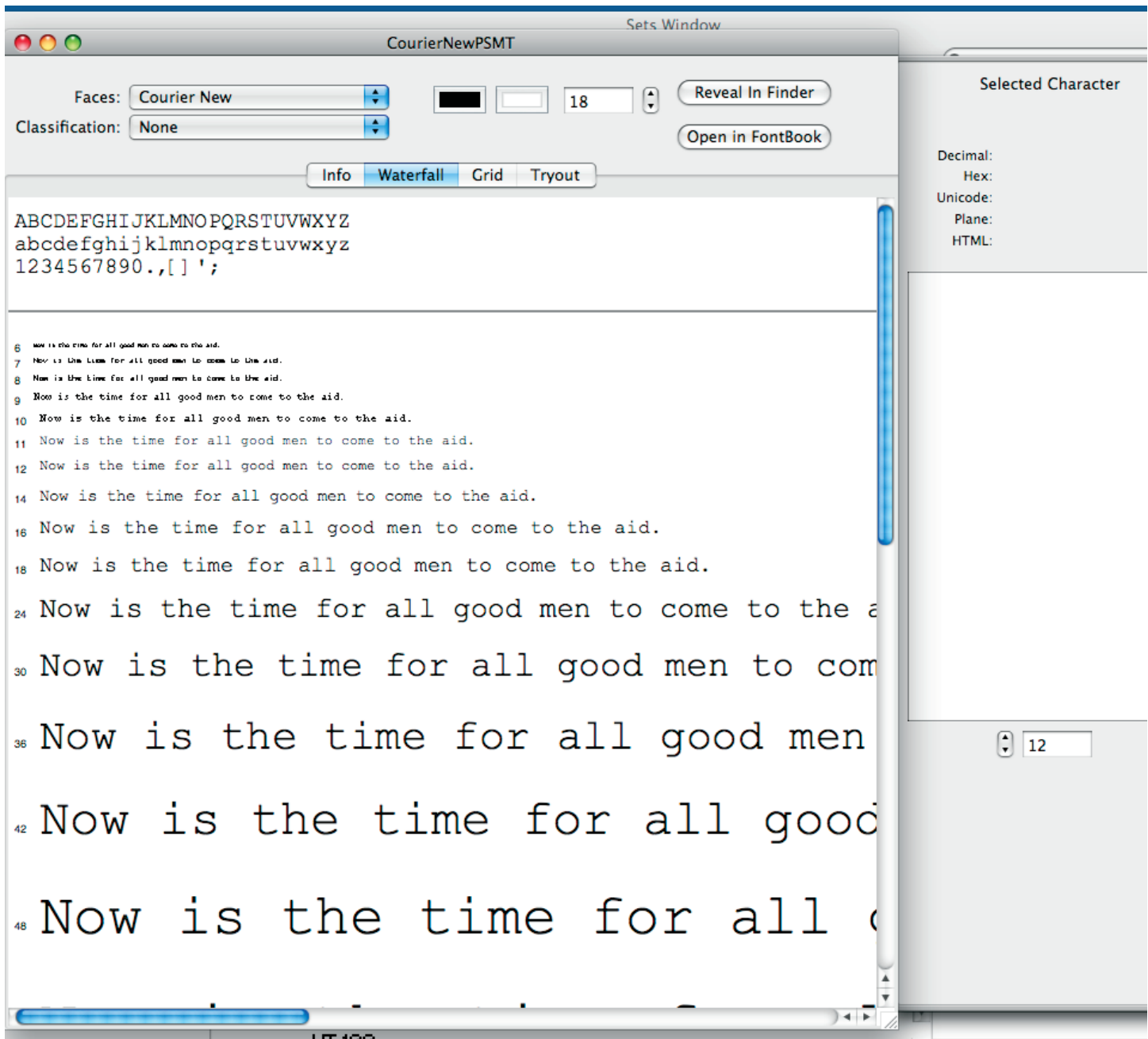


Figure 2-6 Font Sample - Waterfall view

Grid View

The next tab in the font properties window is the Grid View. The Grid View will display all of the characters available in the font, along with a separate panel that shows a detail view of any selected character.

At the top of the grid view section are several controls.

Popup button that allows you to choose which character group is being displayed. Then you see two sets of buttons with arrows that go forward or backward in the the next or previous page of Unicode characters being displayed.

After the forward / backward buttons you see a popup that changes the number of characters displayed in the grid.

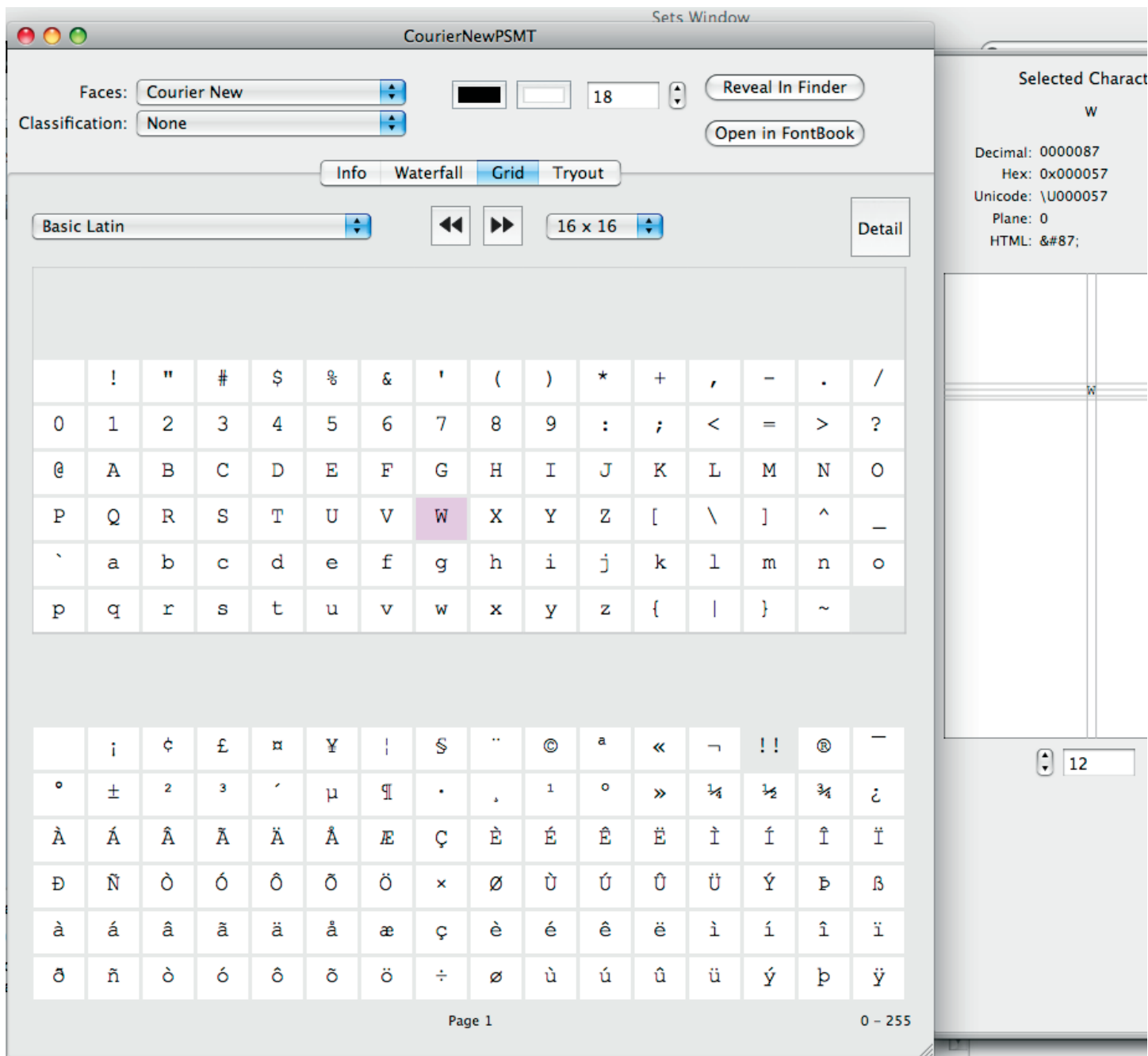


Figure 2-7 The Grid View display

The right most button (Detail) shows or hides the character details view, which shows the currently selected character. You can adjust the size of this displayed character to get a very detailed view of the single character.

At the top of the character display you will see the Decimal, Hex, Unicode and HTML codes for this character.

Preferences

The preferences contains various fields that can be used to modify the behavior of FontCat. Also the text and size of fonts displayed can be controlled, and you also have the option to choose what type of fonts are listed in font listings.

FontListing - this is the main windows font listing table.

List System Fonts - if checked, then fonts from all of the MacOSX standard font locations are listed at the top of the sets table.

~/Library/Fonts/

/Library/Fonts/

/Network/Library/Fonts/

/System/Library/Fonts/

/System Folder/Fonts/

Show Number of Items in Table Rows - if checked, number of entries in a set is displayed at the right side of the sets name.

Map Symbol Fonts To Unicode Characters - When this is checked, symbol fonts map their characters to the corresponding Unicode Character code to display the corresponding character from the keyboard, instead of specifying the character with the Unicode character code.

Font Listing Update UI Interval - This number determines how often the main UI is updated to reflect new fonts being added when searching a folder for fonts.

Font List Table Font Size - Initial size of font names displayed in the font listing table.

Name In Caps - When checked font names are displayed in CAPS as opposed to the normal upper and lower case.

Autoscroll interval - determines the speed of the autoscroll feature in the main font listing. Times are in milliseconds.

Autoscroll Number Rows - The number of rows scrolled each autoscroll interval.

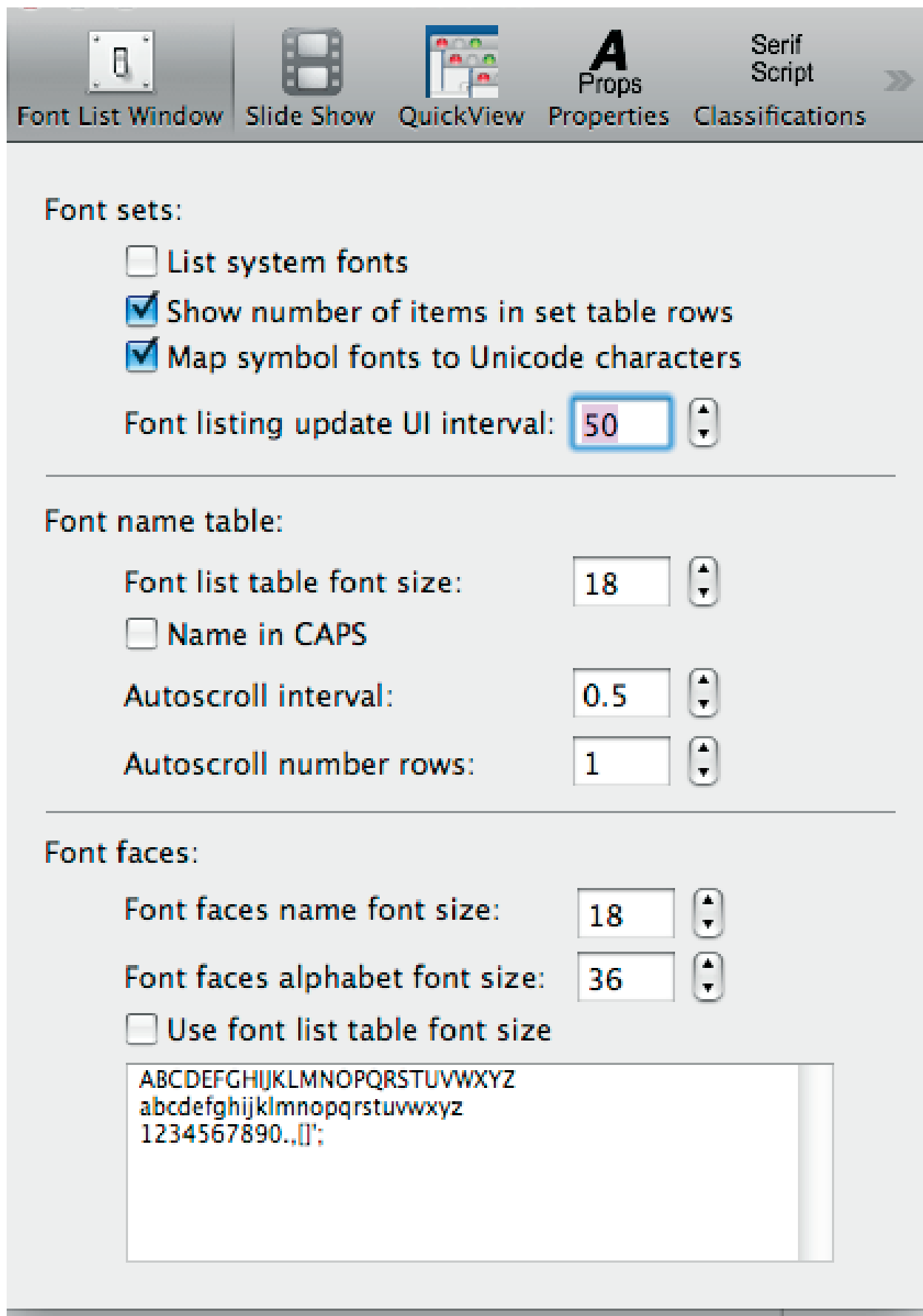


Figure 4-1 Preferences - Main Window settings.

Font faces name font size - The size of the name of the font face displayed in the font faces view.

Font faces alphabet font size - The size of the alphabet text section under the font name in the font faces view.

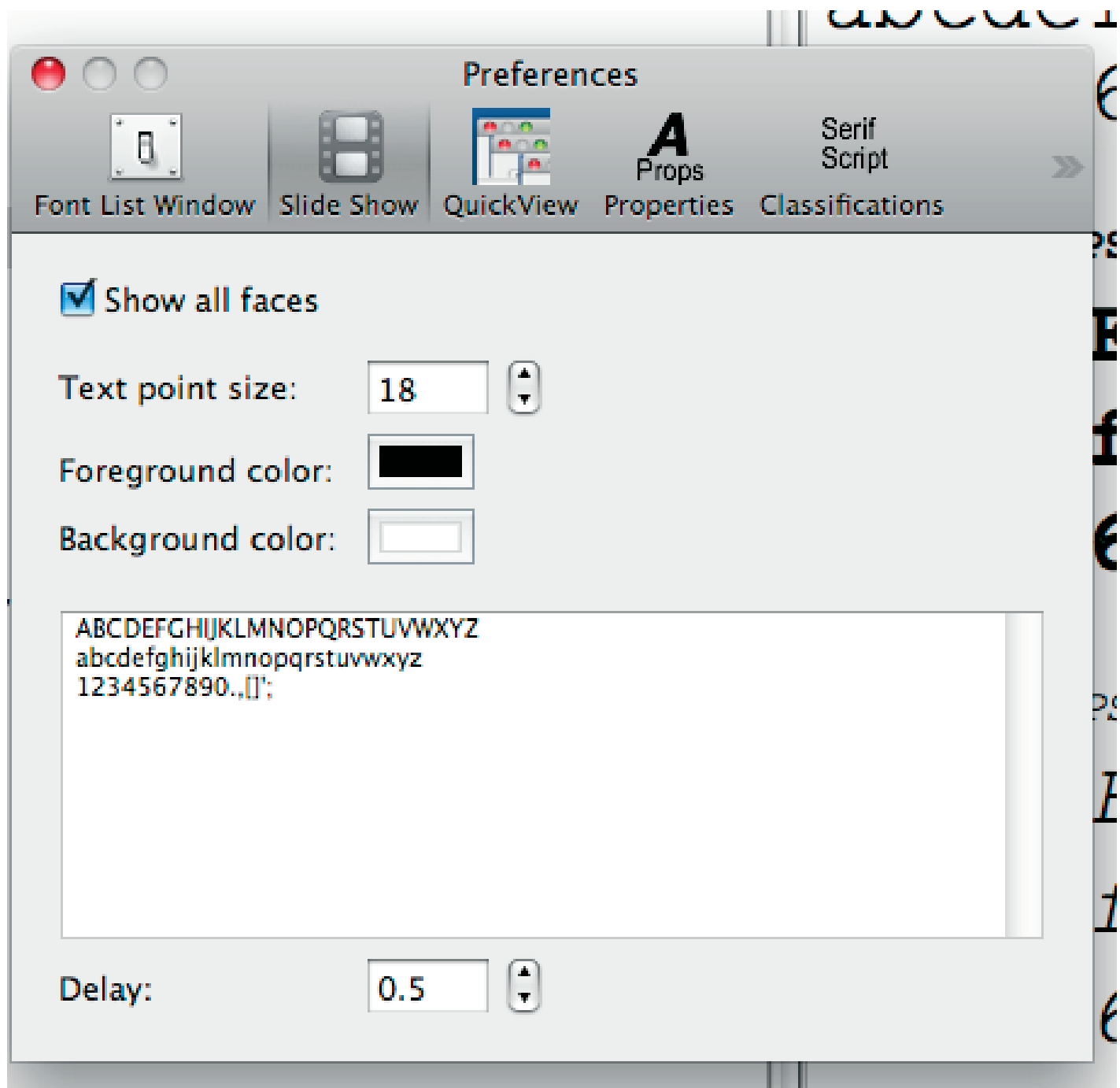


Figure 4-2 Preferences - Slide show

Slide Show Section

Show all faces - if checked, all faces for the fonts are displayed instead of just the first face.

Text point size - The initial size of the font used in the slide show.

Foreground Color - The color of the font being displayed.

Background Color - The color of the background in the slide show view section.

The next field is the text displayed in the slide show window.

Delay - The delay between changing the currently display font face.

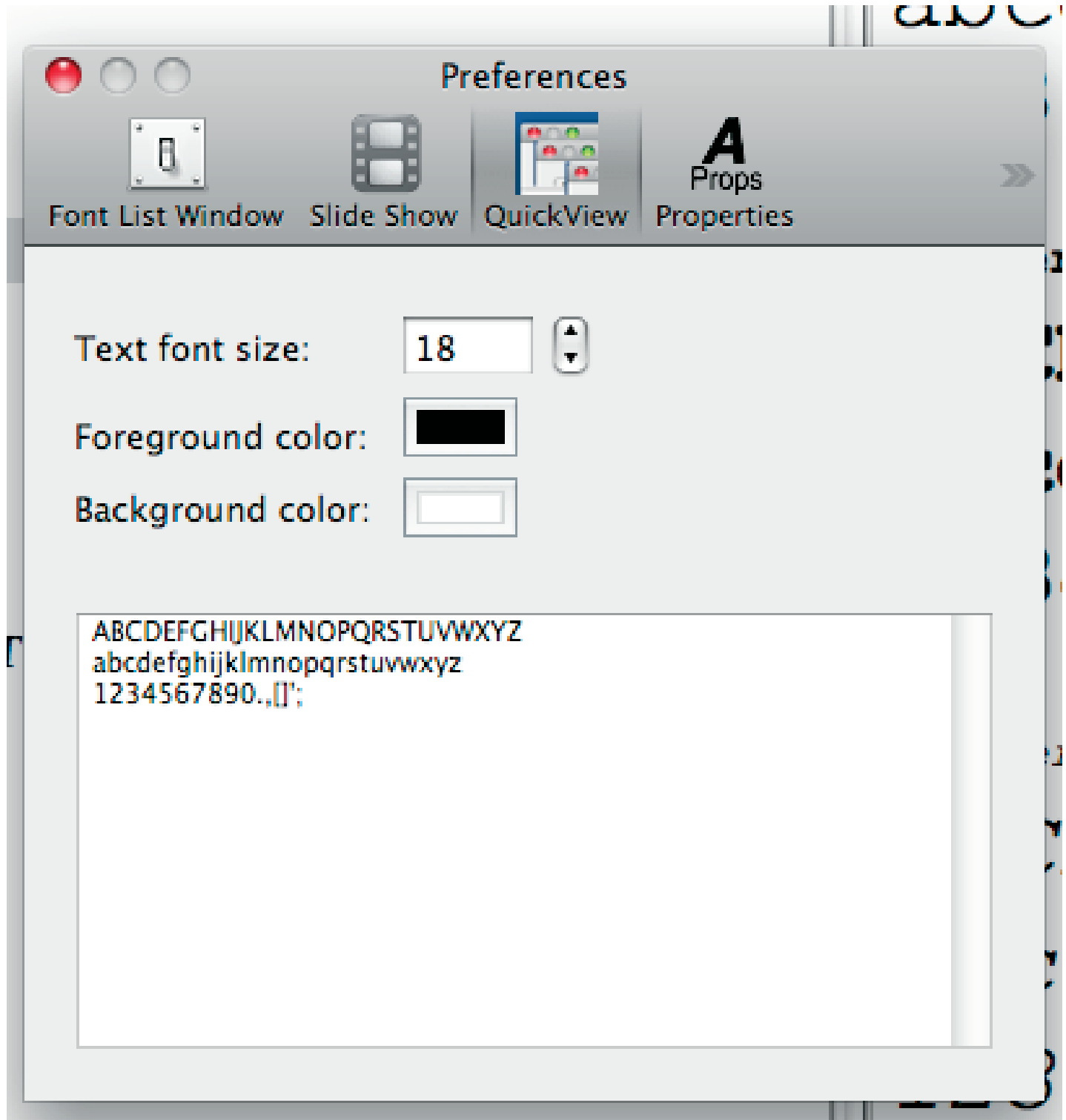


Figure 4-3 Preferences - QuickView

Quick View - This tab sets the default size, foreground and background color and text displayed in the QuickView windows.

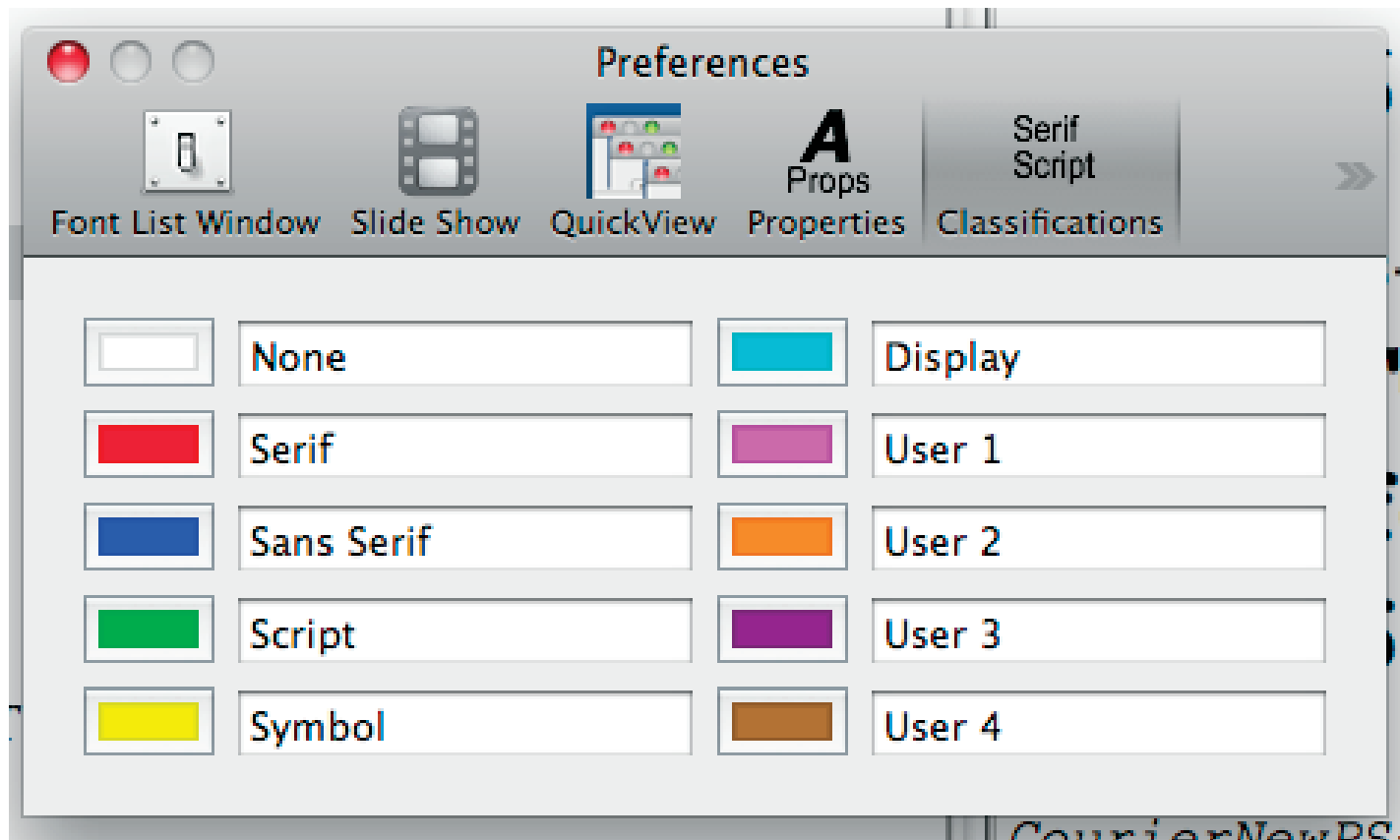


Figure 4-4 Preferences - Classifications

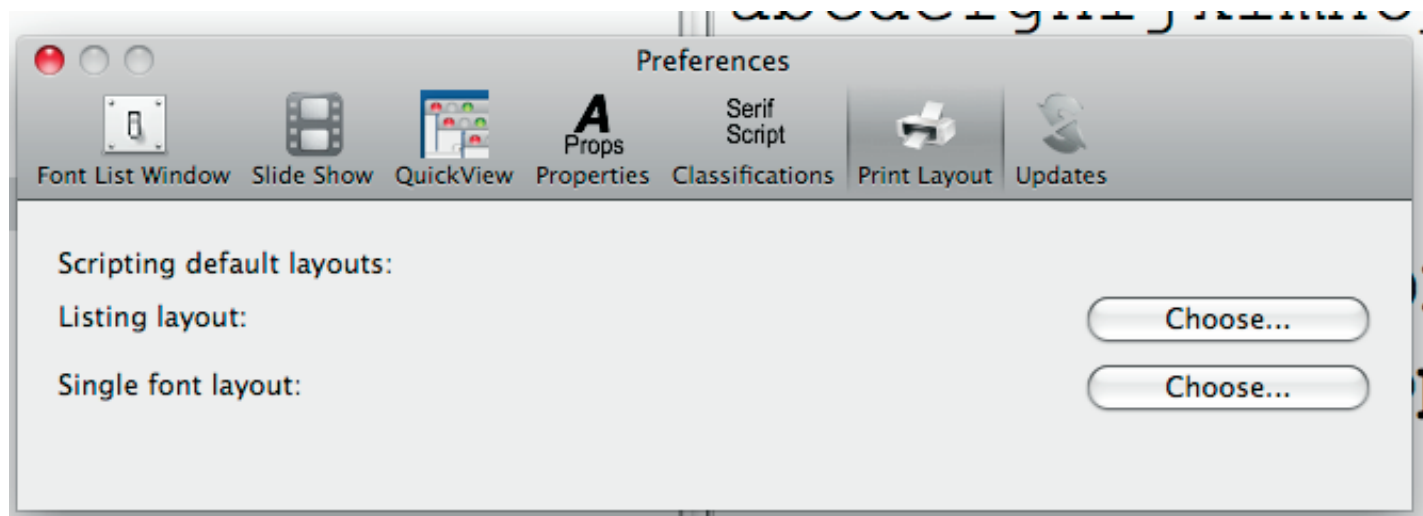


Figure 4-5 Preferences - Default Layouts

Default Layouts - select the layouts used when printing via AppleScript when you don't supply a print layout, or print from the application without specifying a layout.

- Printing

Printing

When you select print from the main menu bar, or click on the print button from the main window, the standard print display appears.

In the lower right corner, you can see that FontCat adds a section to the print dialog for choosing the layout to use when printing.

In the Printer Layout popup, you can either use one of the built-in layouts, one you have designed, or one of the supplied layouts.

The Choose Temp Layout button gives you the opportunity to select a layout for printing just the current time.

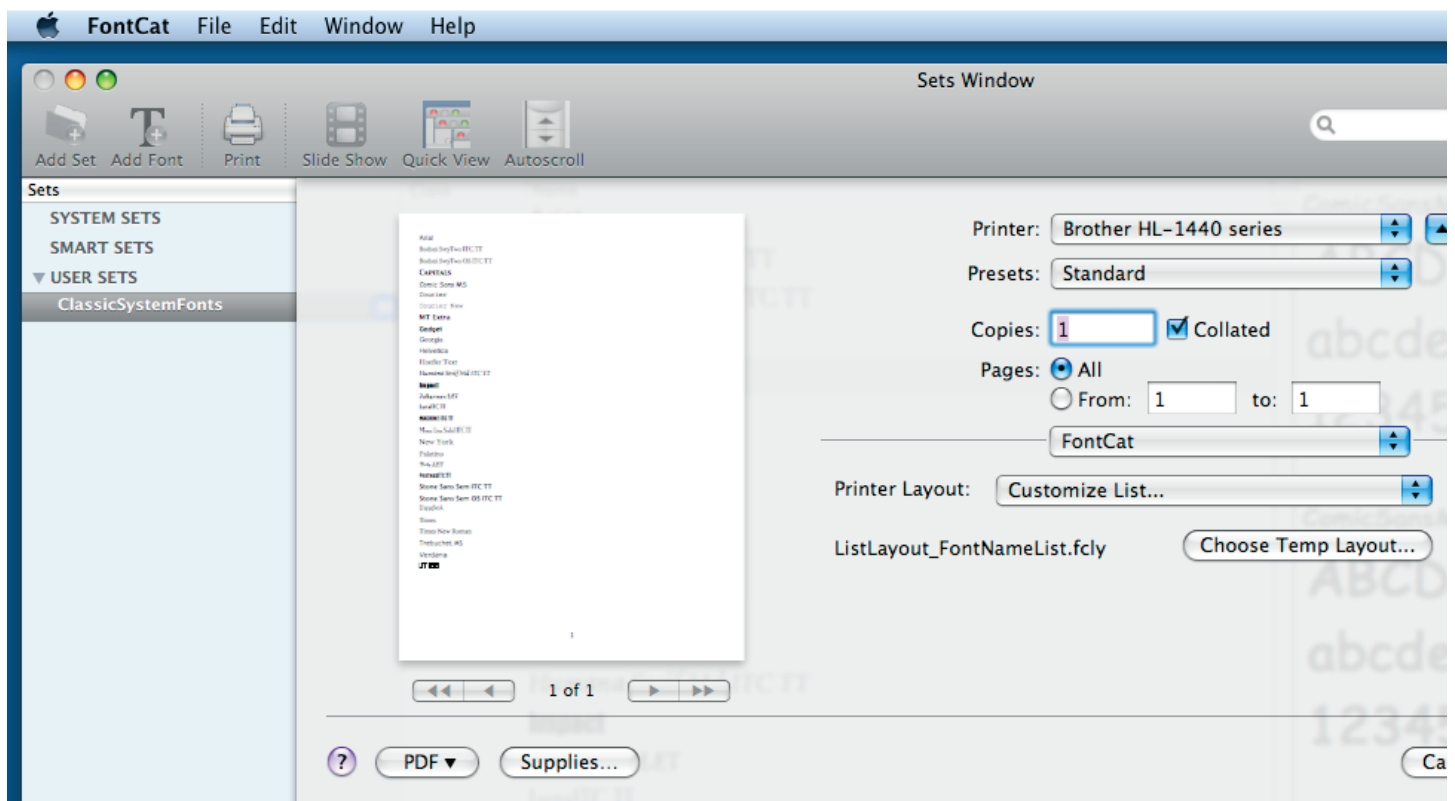


Figure 5-1 Print dialog.

FAQ

Q. Why is there a small delay the first time a table is scrolled or font clicked on.

The first time a font is displayed in its actual face there may be a small delay that is caused the MacOS opening the font. After the first time the font is displayed, fonts will display no further delay. This is caused by the MacOS opening and doing some housekeeping to be able to use the font.

Q. Why do some fonts display a red warning in the main font listing table.

When you see a red warning such as “Missing Printer Font File” it indicates that 1 or more printer font files could not be found for a face in the font. This is only for Type 1 postscript fonts that have separate screen and printer fonts.

Q. I am having problems with some fonts, is there anything I can do?

There are a few things to try.

First, if you notice that FontCat is having problems with some fonts, or crashing, the number one cause is a font that is either borderline corrupt, or corrupt. You should try replacing the font with a fresh version.